

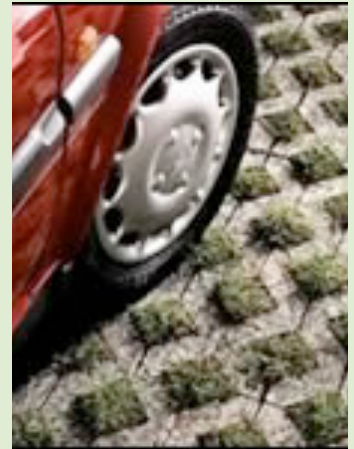
# GRASS BLOCKS

## CONCRETE GRASS BLOCKS

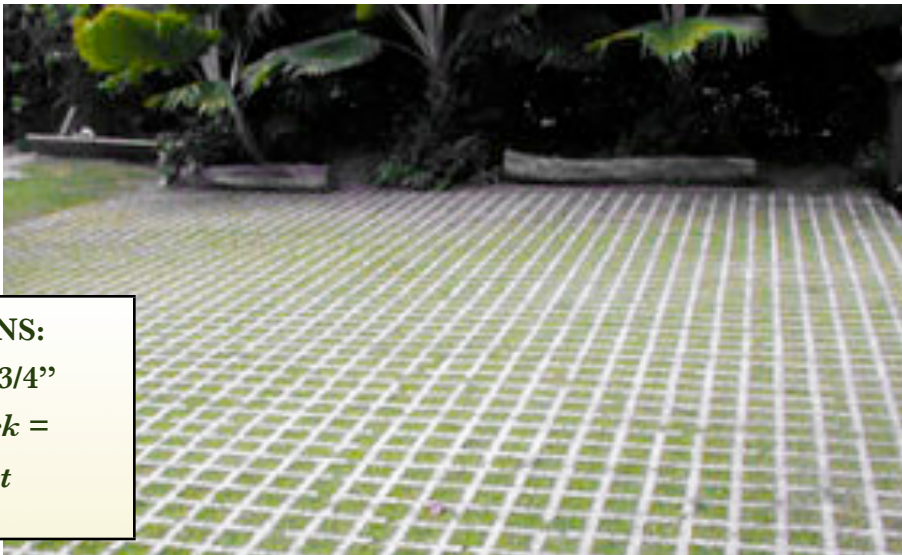
CONCRETE MASONRY LANDSCAPE PRODUCTS ARE INCREASINGLY BEING USED BECAUSE OF THEIR ATTRACTIVE APPEARANCE.

BESIDES COMPLIMENTING THE SURROUNDING ENVIRONMENT, THEY ARE ALSO EASY TO INSTALL, DURABLE AND ENVIRONMENTALLY FRIENDLY.

GRASS BLOCKS ADD A NATURAL BEAUTY TO ANY SPACE.



GRASS BLOCKS CAN BE AN EXCELLENT ALTERNATIVE TO PLAIN CONCRETE SURFACES FOR PARKING LOTS, DRIVEWAYS, AND ACCESS ROADS FOR VEHICLES OR FIRE TRUCKS. GRASS BLOCKS CAN ALSO BE USED FOR EROSION CONTROL. THIS PRODUCT IS UNIQUE AS IT DRAINS AT ABOUT THE SAME RATE AS WOULD AN ORDINARY LAWN IN THE SAME LOCATION.



### DIMENSIONS:

17 3/4" x 17 3/4"

1 Grass Block =

2 square feet



## Flowers Block